

To TID Utility System

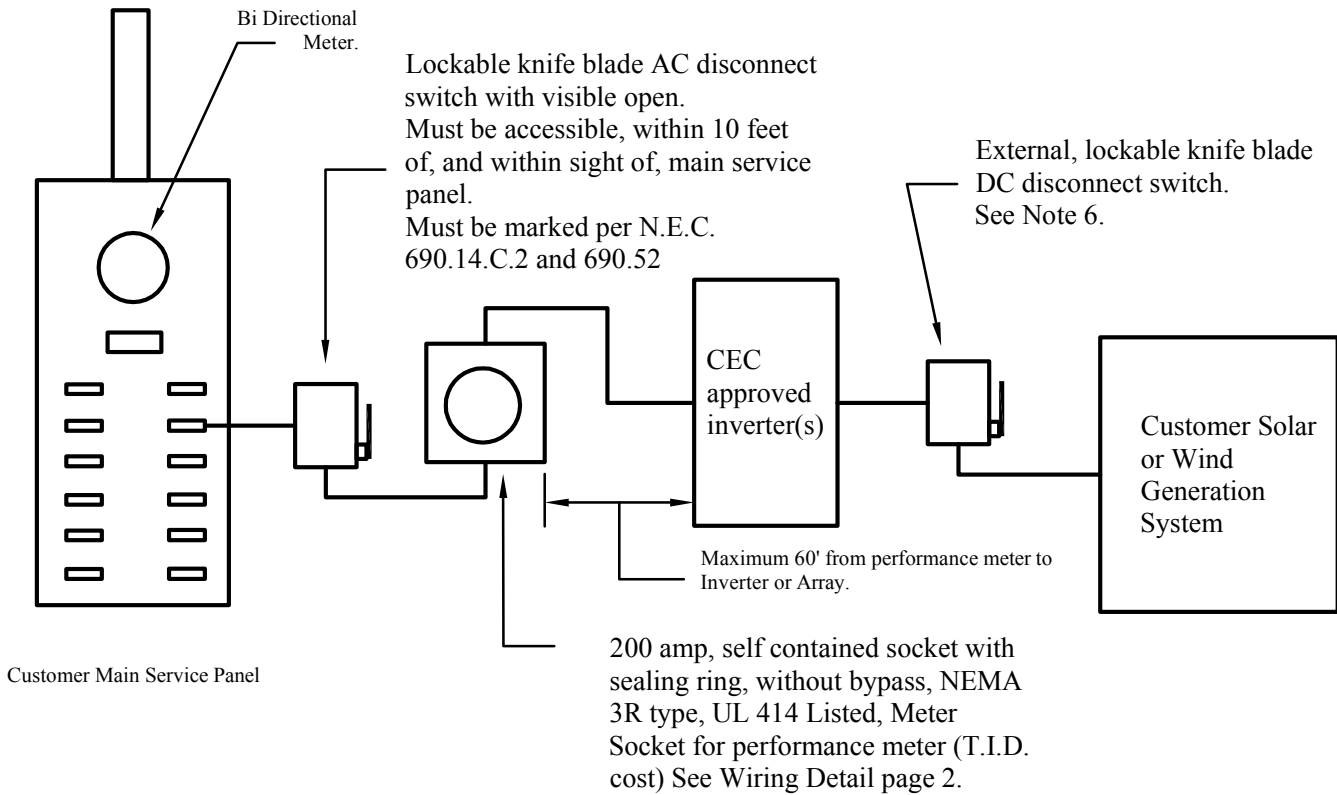

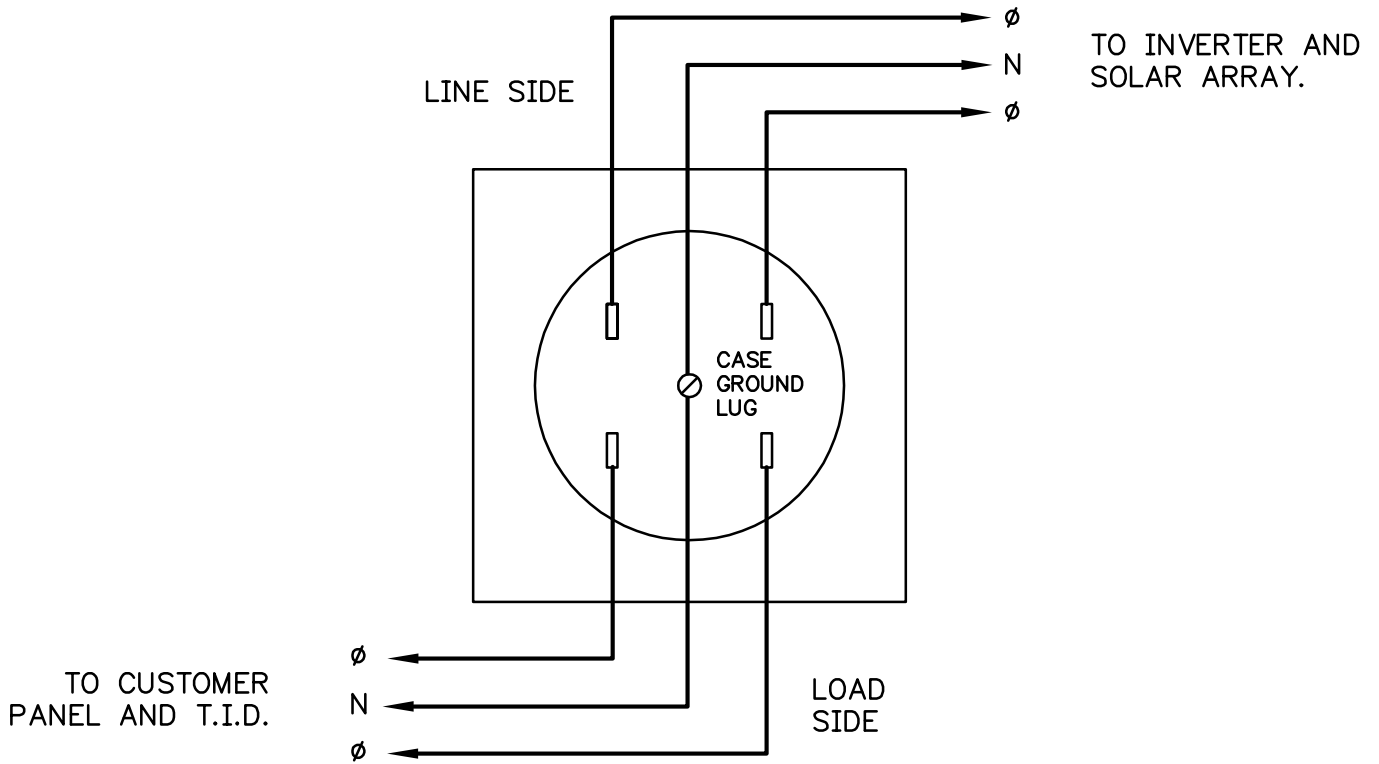


Figure 1 - Simplified Block Diagram of Net Metering Installation

1. Installation shall meet all applicable safety and performance standards established by the National Electric Code, the Institute of Electrical and Electronics Engineers, and accredited testing laboratories such as Underwriters laboratories, and where applicable, rules of the Public Utilities Commission regarding safety and reliability, as well as meet all T.I.D. requirements.
2. T.I.D. will ensure that the metering at the point of interconnection will accurately measure electricity flow in both directions. If replacement is necessary, the applicant shall be responsible for such cost.
3. Applicant shall make provision for installation of a T.I.D. meter dedicated to measuring the output of the generation (provide and install wiring and T.I.D.-specified meter socket and wiring). T.I.D. will reimburse the customer for the reasonable associated costs and will provide the meter.
4. Arrangements utilizing transfer switches or alternatives to the arrangement shown above will be considered upon submission of a diagram and explanation of the proposed deviation(s).
5. Large commercial and industrial customers using C.T. style installations (400 amps and above) will need to contact T.I.D. Engineering for requirements.
6. Built in Inverter Disconnect Switches are NOT an acceptable alternative to the External knife blade DC switch.

 <b>TURLOCK IRRIGATION DISTRICT</b>								<b>CONSTRUCTION STANDARDS</b>					
								<b>NET METERING</b> <b>Residential &amp; Small Industrial</b> <b>Wiring &amp; Meter Installation</b>					
B	ADD NOTE 5 COMMERCIAL & INDUSTRIAL	SDC	DBM	GKT	SDP	KCK	BLL	9-08					
A	ADD INVERTER & DISCONNECT SWITCH	SDC		KCK			BLL	9-06					
--	INITIAL ISSUE	SDC		GKT			BLL	2-03					
<b>REV</b>	<b>DESCRIPTION</b>	<b>INIT</b>	<b>CHK</b>	<b>RV'D</b>	<b>RV'D</b>	<b>RV'D</b>	<b>APP</b>	<b>DATE</b>	<b>SHEET</b> <b>1 OF 2</b>		<b>DWG. NO.</b> <b>51092 B</b>		<b>PAGE</b>

SIMPLIFIED DETAIL OF  
PERFORMANCE METER WIRING.



NET METERING  
Residential & Small Industrial  
Wiring & Meter Installation

CONSTRUCTION STANDARDS

SHEET	51092 B	PAGE
2 OF 2		
DWG. NO.		